

Poolsquad® iPO Ampero

Pool
TECHNOLOGIE

In-situ chlorine generator by saltwater chlorination
+ pH regulator + amperometric regulation



BENEFITS

- **In-situ technology:** chlorine production without adding salt to the pool
- **Direct injection of the sodium hypochlorite solution** into the pipe
- **Easy to install and maintain:** factory pre-wired reactor ready to connect to the hydraulic system
- **Single unit reactor:** salt tank, softened water tank, brine tank, production cell
- **Economical salt consumption:** only one salt refill per season
- **Soft and odourless water**
- **Environmentally friendly solution**
- **Ideal for corrosion-sensitive pools**
- **Salt-free wastewater**
- **100% automatic and easy to use**
- **Bluetooth remote control** with e-Pool® app



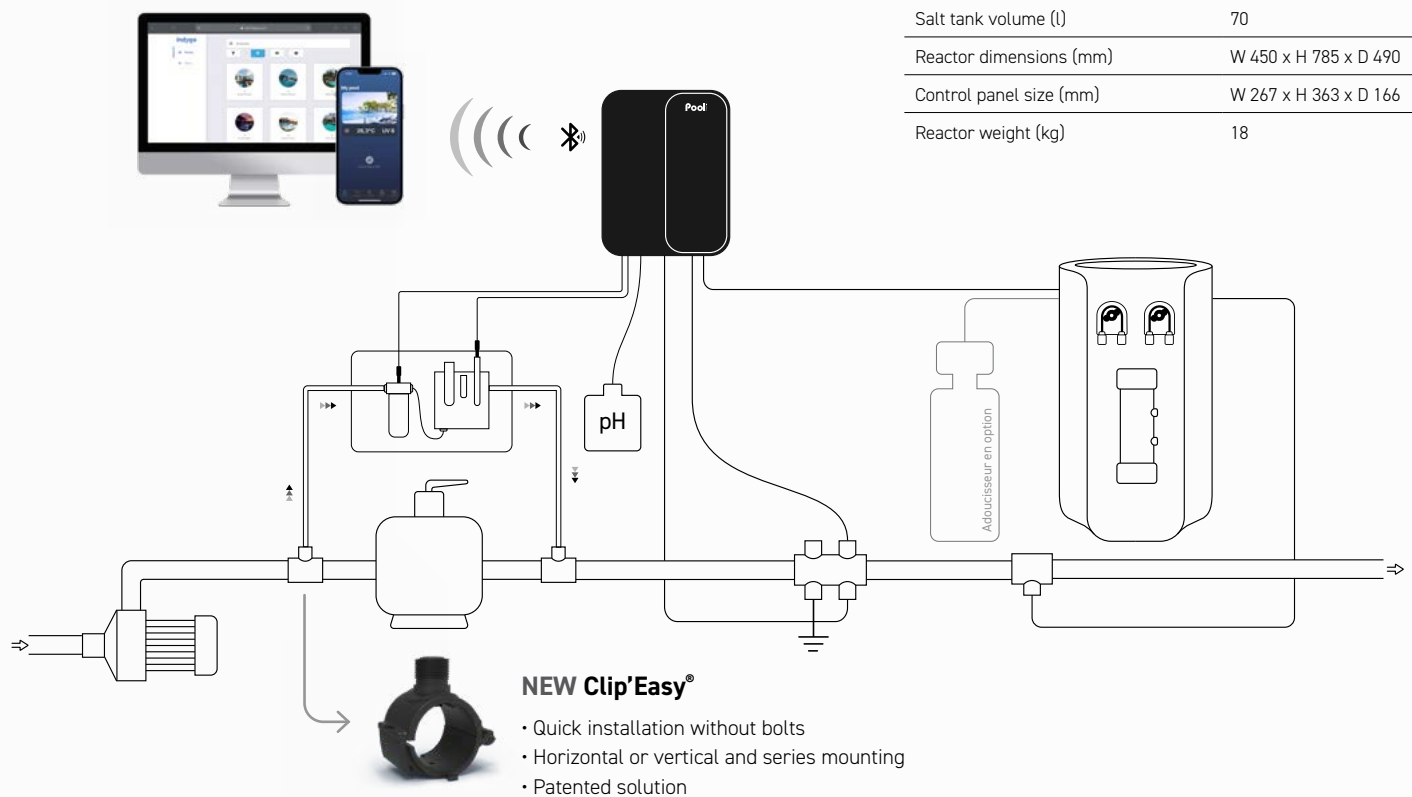
FEATURES

- **Smart Power:** current monitoring ensuring stable production
- **Predictive and proportional pH control** in acid (pH-) or basic (pH+) mode according to injection history
- **Analysis and regulation of the chlorine production by a freshwater chlorine probe**
- **Self-cleaning cell** with adjustable polarity inversion
- **Low mode** to reduce chlorine production when cover closed or bubbles cover installed
- **Boost mode:** 100% superchlorination for up to 24 hours to overcome an increased need of disinfectant
- **Automatic winterization and restart from 15°C**
- **Safeties:** lack of water, low salt, cell fault, pump fault, unreached setpoints, pH setpoint overring and overfeeding, water temperature, high and low Cl value
- **Multilingual alarm message:** origin of the malfunction indicated by written message
- Display of water temperature and cell life
- **Log of events**
- **Self-diagnosis programme for easy maintenance**

Model	Pool volume (m ³)	Chlorine production (g/h)	Reference
Poolsquad iPO Ampero 8	40	8	EPAl24NPSP-G5NM08
Poolsquad iPO Ampero 12	60	12	EPAl24NPSP-G5NM12
Poolsquad iPO Ampero 16	80	16	EPAl24NPSP-G5NX16
Poolsquad iPO Ampero 23	120	23	EPAl24NPSP-G5NX23
Poolsquad iPO Ampero 30	160	30	EPAl24NPSP-G5NX30
Poolsquad iPO Ampero 45	200	45	EPAl24NPSP-G5NZ45
Softener			KIT23AD0U4L

Technical specifications	
Display	LCD 2 lines
Free chlorine setpoint	0,1 to 5 ppm
pH pump flow (l/h)	1,8
Corrective solution	pH- or pH+
pH pump type	peristaltic
pH regulation type	predictive
Setpoint adjustment	6,8 to 7,6
pH probe calibration	2 points pH 7 and pH 10
pH probe	Black
Cell technology	mono or mixte
Number of cell plates	3 to 9
Reverse polarity adjustment	off - 12h - 24h
Cell installation	in line
Cell orientation	vertical
Maximum pressure in the cell (bar)	2
Reactor pump flow (l/h)	10
Salt tank volume (l)	70
Reactor dimensions (mm)	W 450 x H 785 x D 490
Control panel size (mm)	W 267 x H 363 x D 166
Reactor weight (kg)	18

INSTALLATION DIAGRAM



CONTENT

- Control box
- Reactor
- pH Black probe
- Calibration solution pH 7 & pH 10
- Amperometric probe
- Probe holder, injection connector
- Accessories holder with plugs
- Temperature sensor
- Grounding electrode
- Salt and water hardness analysis kit
- Power cable (2 m)
- Clip Easy saddle clamp x2 (Ø 50mm)
- Reducer Ø 63/50 mm x2
- Wall support (with screws)

OPTIONS

- Independent flow switch
- Empty pH can sensor
- Indygo connected pool kit
- Softener

INFO

Amperometric regulation requires a professional expertise. The sale of Ampero regulation device is exclusively reserved to pool specialists who have been specifically trained on this device. Please contact sales representative to ask for a training.

WARRANTIES

2 years
Box + Reactor

2+2* years
Cell

*See a retailer

3 years
Probe pH Black

1 year
Probe Cl Fresh