

# Dosipool® Ampero

Pool  
TECHNOLOGIE

Automatic chlorine dosing + pH regulator  
+ Amperometric regulation



## BENEFITS

- **Smart pH:** predictive regulation according to the history for a perfectly stable pH
- **IPS HD panel** for optimal display quality
- **Dynamic backlit capacitive keys** for easy navigation
- **Automatic brightness adjustment** via light sensor
- **Automatic standby output** by presence sensor
- **Intelligent user guidance** by written message
- **Colour-coded display of the pool status:**  
blue: optimal water quality, orange: information message, red: alarm
- **Indicators of the status of the device's functions**  
using pictograms (OFF, STOP, INJ...)
- **Simultaneous display** of setpoints, Cl and pH values, and water temperature
- **High quality pH Black and Chlorine Fresh probes factory**  
tested and calibrated
- **Bluetooth remote control** with e-Pool® app



## FEATURES

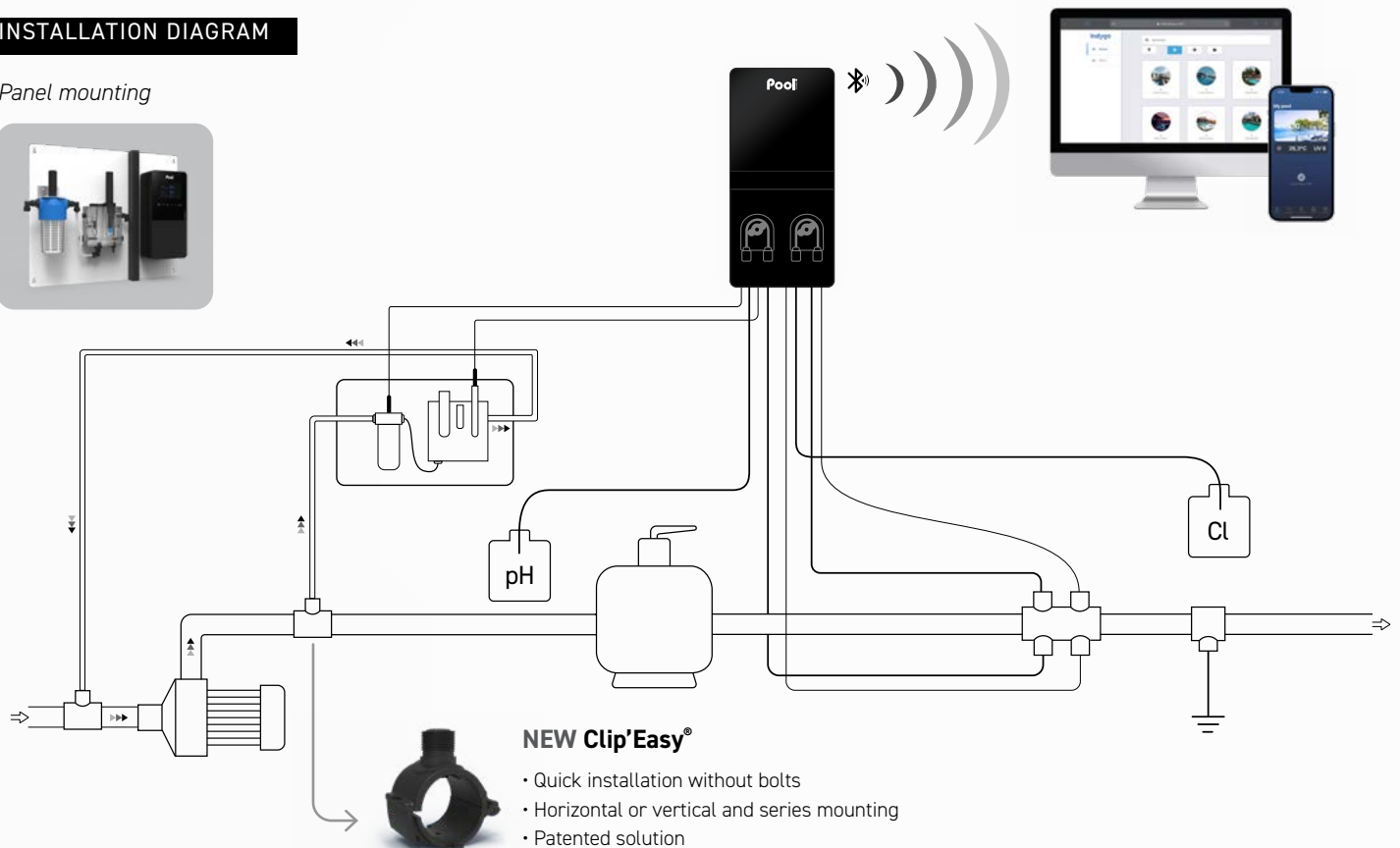
- **Automatic chlorine dosage by amperometric probe**
- **Chlorine regulation by efficient free chlorine probe specifically designed for fresh water**
- **Limits the risk of over-chlorination and protects equipment** (shutters, liner, etc.)
- **Intelligent, predictive and proportional pH control in acid (pH-) or basic (pH+) mode according to injection history**
- **Safeties:** high and low ampero values, unreached setpoints, pH setpoint overrun and overfeeding
- **Multilingual alarm message:** origin of the malfunction indicated by written message
- **Adjustable free chlorine and pH setpoints**
- **Log of events**
- **Easy installation and assembly**

Model	Pool volume (m <sup>3</sup> )	Pumps flow (l/h)	Reference
Dosipool Ampero	120	1,8	DOAP23NPSP-G5
Dosipool Ampero panel	120	1,8	DOAP23NPSP-G5 PANAMP

Technical specifications	
Display	IPS HD panel
Screen size	4,3 inches
Keyboard type	capacitives keys
Presence sensor range (cm)	20
Free chlorine adjustment setpoint (ppm)	0,1 to 5 ppm
Amperometric probe	Cl Fresh
pH pump flow (l/h)	1,8
Corrective solution	pH- or pH+
pH pump type	peristaltic
pH regulation type	predictive
pH setpoint adjustment	6,8 to 7,6
pH probe calibration	2 points pH 7 and pH 10
Control panel size (mm)	W 140 x H 300 x D 97

## INSTALLATION DIAGRAM

### Panel mounting



## CONTENT

- Control box
- pH Black probe
- Calibration solutions pH 7 & pH 10
- Fresh water chlorine probe
- Ampero measure chamber with connection kit
- Probe holder, injection connector
- Low water/temperature sensor
- Independent flow switch
- Accessories holder with plugs
- Clip Easy saddle clamp x2 (Ø diam 50 mm)
- Grounding electrode
- Power cable (2 m)
- Reducer Ø 63/50 mm x2
- Wall support (with screws)

## OPTIONS

- Empty pH can sensor
- Empty Cl can sensor
- Indygo connected pool Kit

## INFO

Amperometric regulation requires a professional expertise. The sale of Ampero regulation device is exclusively reserved to pool specialists who have been specifically trained on this device. Please contact sales representative to ask for a training.

## WARRANTIES

**2** years Box

**3** years Probe pH Black

**1** year Probe Cl Fresh