

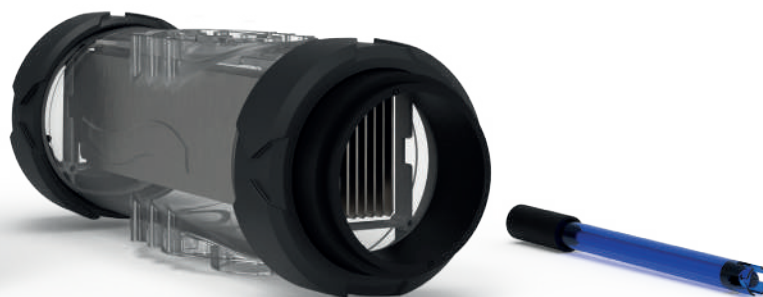
Justsalt Duo®

Saltwater chlorinator + pH regulator

Pool
TECHNOLOGIE

BENEFITS

- Intuitive navigation on backlit LCD display
- In line or dashboard display
- Soft touch keyboard with quick access keys
- Low Salt / Normal Salt mode (depending on model)
- High quality pH probe, factory tested and calibrated
- Integrated silent dosing pump
- Bluetooth remote control with e-Pool® app
- Compatible with new European regulation (N°2019/1148):
pH correcting agent adjustable concentration
- Transparent accessories holder



FEATURES

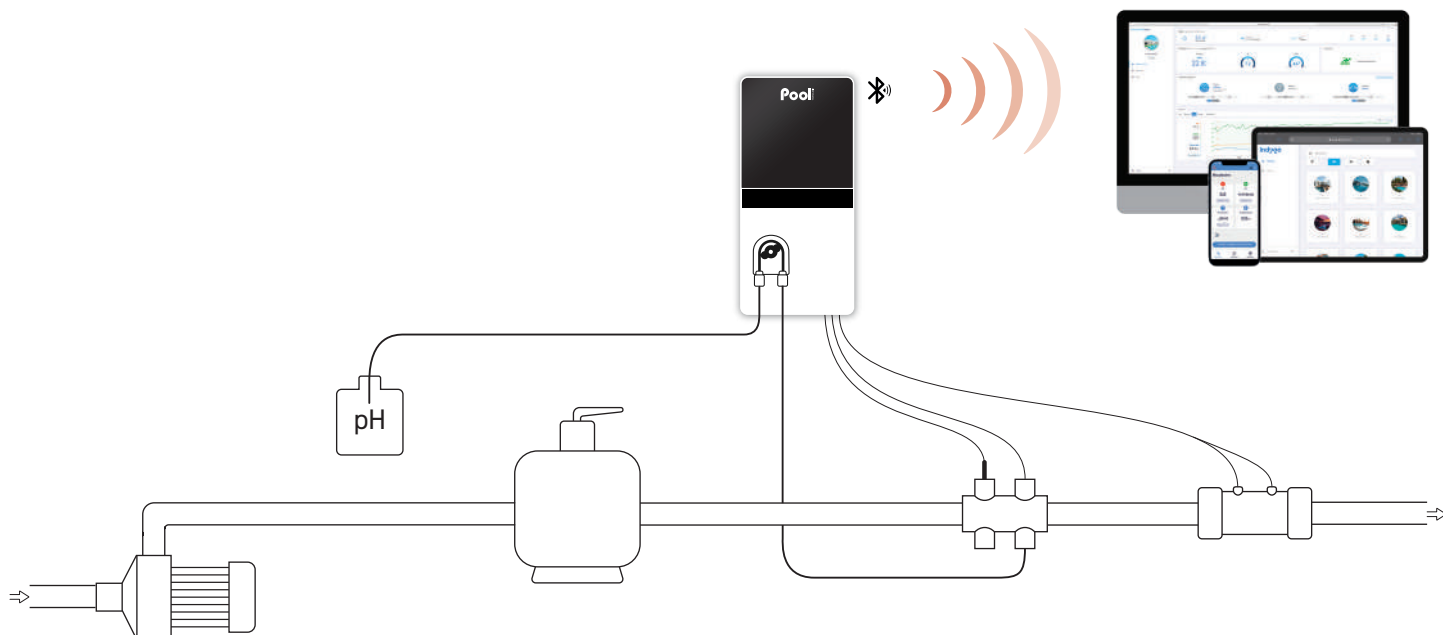
- **Smart Power:** current monitoring ensuring stable production
- **Smart and proportional pH regulation according to the pool volume** in acid (pH-) or base (pH+) mode
- **Self-cleaning cell with memory polarity inversion**, adjustable according to water hardness
- **Operate at any salt level from 2,5 g/l (NS) and 1,5 g/l (LS)** without high limit
- **Superboost mode:** 125% superchlorination for up to 24 hours to overcome an increased need of disinfectant
- **Automatic winterization and restart from 15C°**
- **Multilingual communication interface**
- **Multilingual alarm message:** written message display of malfunction cause
- **Safeties:** alarms for setpoint overrun and overfeeding
- **Display of pool salt level, water temperature and cell lifespan**
- **Log of events**
- **Self-diagnosis programme for easy maintenance**

Model	Pool volume* (m ³)	Chlorine production (g/h)	Reference
Justsalt Duo 8	40	8	ELPH24NPSA-G4NM08
Justsalt Duo 12	60	12	ELPH24NPSA-G4NM12
Justsalt Duo 16	NS 80 / LS 60	NS 16 / LS 12	ELPH24NPSA-G4HX16
Justsalt Duo 23	NS 120 / LS 80	NS 23 / LS 16	ELPH24NPSA-G4HX23
Justsalt Duo 30	NS 160 / LS 120	NS 30 / LS 23	ELPH24NPSA-G4HX30

*In hot climates, reduce the volume by 20% - NS : Normal Salt (5 g/l) / LS : Low Salt (1,5 g/l)

Technical specifications	
Display	LCD 2 lines
pH pump flow (l/h)	1,8
Corrective solution	pH- or pH+
Type of pH regulation	smart
Setpoint adjustment	6,8 to 7,6
pH probe calibration	2 points pH 7 & pH 10
pH probe	Blue
Polarity inversion adjustment	from 2h to 24h in increments of 1h
Cell installation	in line
Cell orientation	horizontal or vertical
Cell length (mm)	225
Maximum pressure in the cell (bar)	2
Maximum flow in the cell (m ³)	22 or By-pass
Maximum water temperature (°C)	40
Control panel size (mm)	W 140 x H 300 x D 97

INSTALLATION DIAGRAM



CONTENT

- Control box
- Chlorination cell
- Cell cable (2 m)
- pH Blue probe
- Calibration solutions pH 7 & pH 10
- Probe holder, injection connector
- Accessories holder with plugs
- Salt/temperature sensor
- Salt and water hardness analysis kit
- Power cable (2 m)
- Collar Ø 63 mm x2
- Reducer Ø 63/50 mm x4
- Wall support (with screws)

OPTIONS

- Grounding electrode
- Independent flow switch
- e-Pool® Connect Connected Pool kit
- Collar Ø 50 mm x2

WARRANTIES

- 2 years** Box
- 2+2* years** Cell
- 2 years** Probe pH Blue

* See a retailer