

# Pro Salt<sup>®</sup>

**In line chlorine generator  
by saltwater chlorination**

**Production capacity : 50 to 560 g/h**



# S T I F E N B

**3.2 inch LCD display**  
8-line backlit display

**Intuitive navigation**  
thanks to simple control buttons

**Multi-language navigation menu**

**Powerful chlorine production from 50 to 560 g/h**  
adapted to all needs

**Cell independence:** continuity of disinfection is ensured in the event of a cell or module failure



## **Connect Pro option**

Remote display of the device parameters, alarms and event history

## **FEATURES**

**Smart Power:** current monitoring ensuring stable chlorine production

**Self-cleaning cell(s) by adjustable polarity inversion**  
with memory, depending on water hardness

**Boost mode: superchlorination adjustable from 2 hours to 24 hours**  
in 2-hour steps to overcome an increased need of disinfectant

**Salt and temperature adjustment**

**Log of events**

**Alarms indicated by written message:** no flow, low salt, low water temperature, cell failure

**Self-diagnostic program** for easy maintenance



## A TAILOR-MADE SOLUTION

**Pro Salt® is available in two sizes of compact and ergonomic box**  
to offer a tailor-made solution according to the type of installation



Chlorine production :  
50 to 280 g/h

**Pro Salt® 50**  
**Pro Salt® 70**  
**Pro Salt® 100**  
**Pro Salt® 140**  
**Pro Salt® 210**  
**Pro Salt® 280**



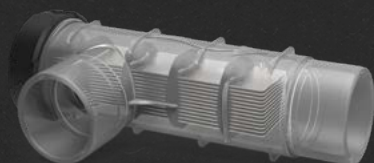
Chlorine production:  
420 to 560 g/h

**Pro Salt® 420**  
**Pro Salt® 560**

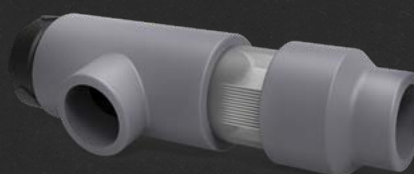
## POWERFUL PRODUCTION CELLS FOR INTENSIVE USE

### Long life cell

The high-quality electrode coating ensures a lifespan of 10 000 hours under normal operating conditions. Easy to maintain: only worn electrodes need to be replaced in the system. Transparent cell to easily check the scaling state of the electrodes.



Prosalt® 50-100 electrode  
**SENS003119**



Prosalt® 70-140-210-280-420 electrode  
**SENS003120**

## A MODULAR DEVICE

**Several control options are available**  
to make the unit even more efficient

### pH regulation

Proportional to the volume of the pool according to a patented principle. More precise, the diffusion of the corrective agent takes into account the inertia of the pool and optimises the consumption of chemicals.

pH Blue probe



### ORP control

Control of chlorine production to limit the risks of over-chlorination and to protect pool equipments.

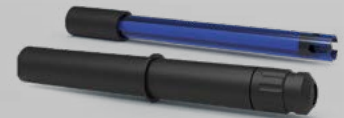
ORP Gold / pH Blue probes



### Amperometric regulation

Analysis and regulation using an amperometric probe measuring the free chlorine level in the pool (in ppm)

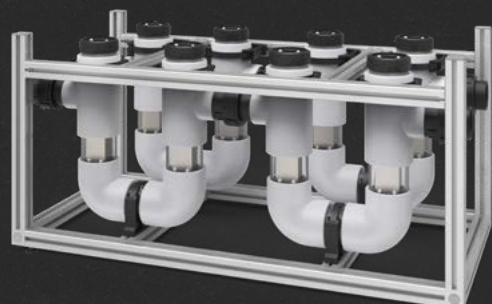
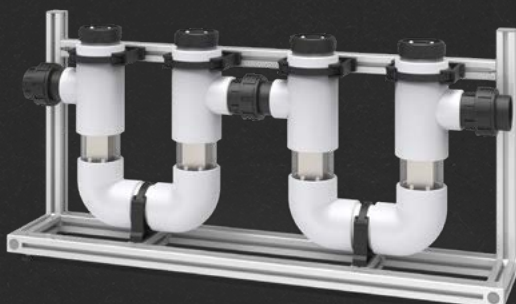
Chlore Salt / pH Blue probes



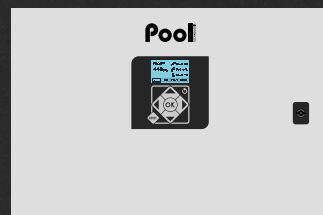
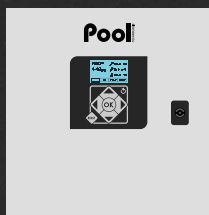
## OPTION

### PRE-MOUNTED CELLS ON FRAME

**Modular frame** allowing the number of cells to be adapted to the needs of the installation (from 1 to 8 cells). For easy installation and maintenance: assembled in the factory, the cells are ready to use.







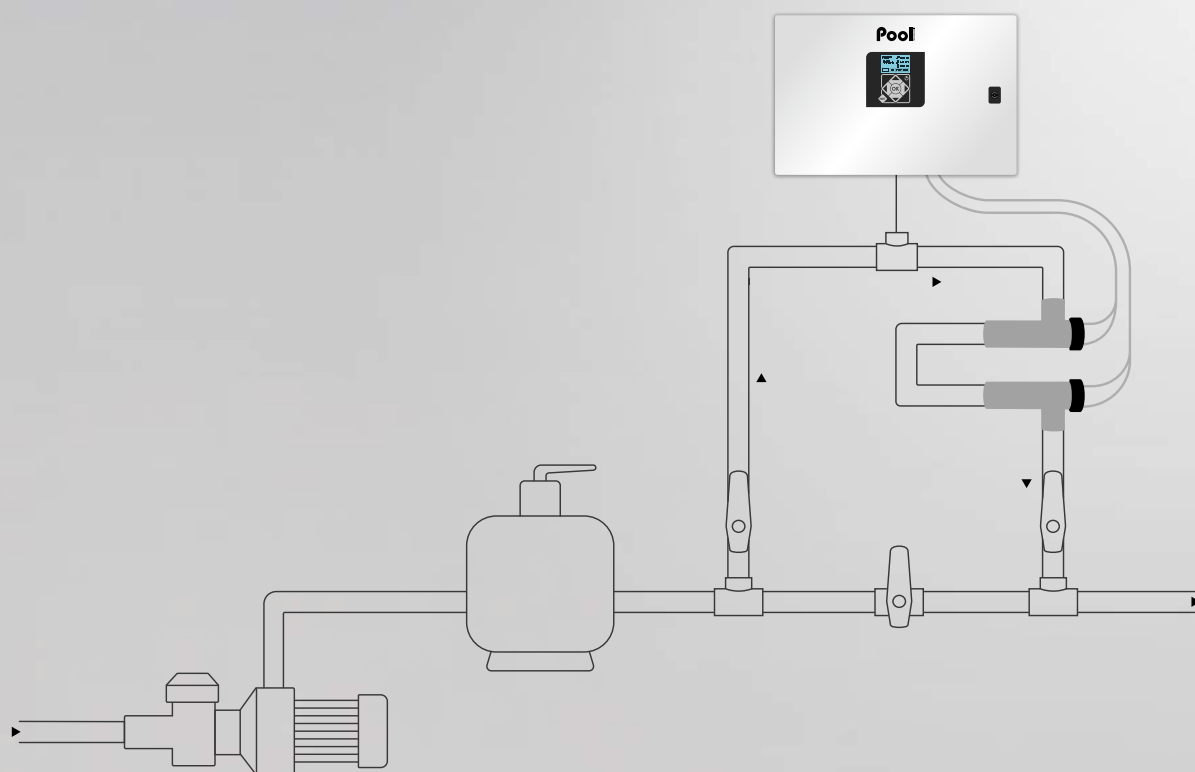
| BOXES                                | PS 50 - 70 - 100 - 140 - 210 - 280                | PS 420 - 560              |
|--------------------------------------|---|---------------------------|
| Chlorine production (g/h)            | 50 - 70 - 100 - 140 - 210 - 280                   | 420 - 560                 |
| Production control                   | from 0 to 560 g/h by 5 g/h steps                  |                           |
| Number of cells                      | 1 - 1 - 2 - 2 - 3 - 4                             | 6 - 8                     |
| Cells lifespan                       | 10 000  | 10 000                    |
| Boost mode                           | yes   | yes                       |
| Polarity inversion                   | yes   | yes                       |
| User chlorination test               | yes   | yes                       |
| Sensors                              | Lack of water / Salt / Temperature / Flow / Cover |                           |
| Power supply voltage (V)             | 230 - 50/60Hz                                     | 230 - 50/60Hz             |
| Maximum consumption (W)              | 300 - 400 - 600 - 800 - 1200 - 1600               | 2400 - 3200               |
| Production current (A)               | <20   | <20                       |
| Salt rate (kg/m <sup>3</sup> )       | 3 to 35   | 3 to 35                   |
| Minimum to maximum water temperature | From 15 to 40 °C                                  | From 15 to 40°C           |
| Number of frame (in option)          | 0 - 0 - 0 - 1 - 1 - 1                             | 1 - 1                     |
| Boxes dimensions                     | W 400 x H 325 x D 200 mm                          | W 596 x H 396 x D 235 mm  |
| Frame dimensions                     | W 1100 x H 540 x D 545 mm                         | W 1100 x H 540 x D 545 mm |

| pH REGULATION OPTION  |                                |                       |
|-----------------------|--------------------------------|-----------------------|
| Measurement principle | pH probe + measurement chamber |                       |
| Type of regulation    | Proportional to the volume     |                       |
| Type of pump          | Peristaltic 4 L/h              | Peristaltic 4 L/h     |
| Corrective agent      | pH- (acid) pH+ (base)          | pH- (acid) pH+ (base) |
| Probe calibration     | 2 points pH 7 & pH 10          | 2 points pH 7 & pH 10 |
| Factory calibration   | yes                            | yes                   |
| Calibration solution  | pH 7 & pH 10                   | pH 7 & pH 10          |

| CHLORINE PRODUCTION CONTROL OPTION |  |  |
|------------------------------------|--|--|
| ORP                                | ORP probe + measurement chamber          |  |
| Amperometric                       | Amperometric probe + measurement chamber |  |

| CONNECTIVITY OPTION |                    |  |
|---------------------|--------------------|--|
| Connect Pro         | OPT19CONPRO-MINPOO |  |

# PRINCIPLE DIAGRAM



| Model        | Reference    | pH option    | pH/ORP option | pH/Ampero option |
|--------------|--------------|--------------|---------------|------------------|
| Pro Salt 50  | PROS23POO050 |              |               |                  |
| Pro Salt 70  | PROS23POO070 |              |               |                  |
| Pro Salt 100 | PROS23POO100 | OPT20PHPROS1 | OPT20ORPPROS1 | OPT20CLPROS1     |
| Pro Salt 140 | PROS23POO140 |              |               |                  |
| Pro Salt 210 | PROS23POO210 |              |               |                  |
| Pro Salt 280 | PROS23POO280 |              |               |                  |
| Pro Salt 420 | PROS23POO420 | OPT20CLPROS2 | OPT20CLPROS2  | OPT20CLPROS2     |
| Pro Salt 560 | PROS23POO560 |              |               |                  |

## WARRANTIES

Control box: **2 years**

Cell(s): **2 years**

within the limit of 10,000 hours of operation

pH probe: **1 year**

ORP probe: **1 year**

Chlorine Salt probe: **1 year**