

# Poolsquad® iPO ORP

Pool  
TECHNOLOGIE

In-situ chlorine generator by saltwater chlorination  
+ pH regulator + ORP controller

New 2023

Patented technology



## BENEFITS

- **In-situ technology:** chlorine production without adding salt to the pool
- **Direct injection of the sodium hypochlorite solution** into the pipe
- **Easy to install and maintain:** factory pre-wired reactor ready to connect to the hydraulic system
- **Single unit reactor:** salt tank, softened water tank, brine tank, production cell
- **Economical salt consumption:** only one salt refill per season
- **Soft and odourless water**
- **Environmentally friendly solution**
- **Ideal for corrosion-sensitive pools**
- **Salt-free wastewater**
- **100% automatic and easy to use**
- **Bluetooth remote control with e-Pool® app**



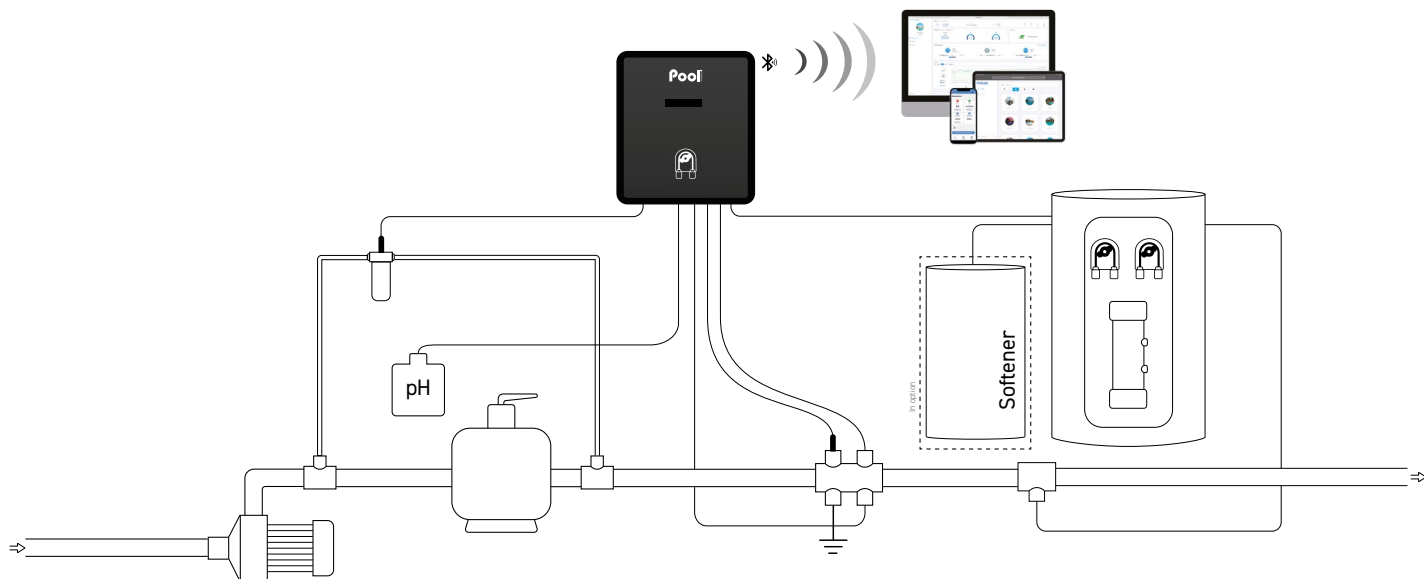
## FEATURES

- **Smart Power:** current monitoring ensuring stable production
- **Predictive and proportional pH control** in acid (pH-) or basic (pH+) mode according to injection history
- **Control of chlorine production by ORP probe**
- **Self-cleaning cell** with adjustable polarity inversion
- **Low mode** to reduce chlorine production with cover or bubble cover installed
- **Boost mode:** 100% superchlorination for up to 24 hours to overcome an increased need of disinfectant
- **Automatic winterization and restart from 15°C**
- **Multilingual communication interface**
- **Safeties:** lack of water, low salt, salt, cell fault, pump fault, Ph setpoint overrun and overfeeding, water temperature, high and low ORP value : cause of malfunction indicated by written message
- Display of water temperature and cell life
- **Log of events**
- **Self-diagnosis programme for easy maintenance**

Model	Pool volume (m <sup>3</sup> )	Chlorine production (g/h)	Reference
Poolsquad iPO ORP 8	40	8	EPOI23NPSP-G4NM08
Poolsquad iPO ORP 12	60	12	EPOI23NPSP-G4NM12
Poolsquad iPO ORP 16	80	16	EPAI23NPSP-G4NX16
Poolsquad iPO ORP 23	120	23	EPOI23NPSP-G4NX23
Poolsquad iPO ORP 30	160	30	EPOI23NPSP-G4NX30
Poolsquad iPO ORP 45	200	45	EPOI23NPSP-G4NZ45
Softener			KIT23ADOU4L

Technical specifications	
Display	LCD 2 lines
ORP setpoint adjustment (mV)	200 to 900
ORP probe calibration	1 point 475 mV
ORP probe	ORP Gold
ph pump flow (l/h)	1,8
Corrective solution	pH- or pH+
pH pump type	peristaltic
pH regulation type	predictive
Setpoint adjustment	6,8 to 7,6
pH probe calibration	2 points pH 7 and pH 10
pH probe	Black
Cell technology	mono or mixte
Number of cell plates	3 to 9
Reverse polarity adjustment	off - 12h - 24h
Cell installation	in line
Cell orientation	vertical
Maximum pressure in the cell (bar)	2
Reactor pump flow (l/h)	10
Salt tank volume (l)	70
Reactor dimensions (mm)	W 450 x H 785 x D 490
Control panel size (mm)	W 267 x H 363 x D 166
Reactor weight (kg)	18

## INSTALLATION DIAGRAM



## CONTENT

- Control box
- Reactor
- pH Black probe
- Calibration solution pH 7 & pH 10
- ORP Gold probe
- Calibration solution 475 mV
- Probe holder, injection connector
- Accessories holder with plugs
- Temperature sensor
- Grounding electrode
- Salt and water hardness analysis kit
- Power cable (2 m)
- Saddle clamp x2 (Ø 50mm)
- Reducer Ø 63/50 mm x2
- Wall support (with screws)
- User manual

## OPTIONS

- Independent flow switch
- Empty pH can sensor
- e-Pool® Connect connected Pool kit
- Softener

## WARRANTIES

- 2 years** Box + Reactor
- 2+2\*** years Cell  
\* See a retailer
- 3 years** Probe pH Black
- 1 year** Probe ORP Gold