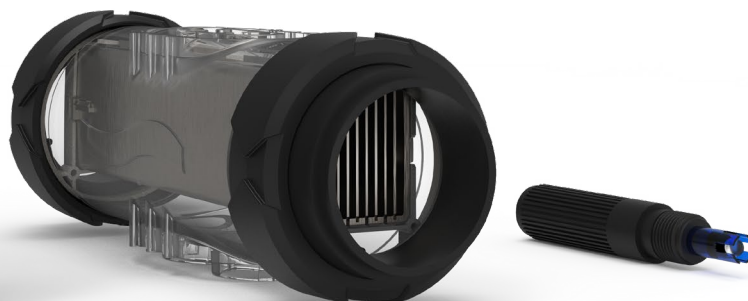


### BENEFITS

- **Exclusive Smart Reverse technology:** self-cleaning of the cell according to the hardness of the water without any time adjustment or parameter setting
- **Smart pH:** predictive regulation according to the history for a perfectly stable pH
- **IPS HD panel** for optimal display quality
- **Dynamic backlit capacitive keys** for easy navigation
- **Automatic standby output** by presence sensor
- **Colour-coded display of the pool status:** blue: optimal water quality, orange: information message, red: alarm
- **Indicators of the status of the device's functions** using pictograms (OFF, STOP, INJ...)
- **Simultaneous display** of setpoints, production and pH values, salt level and water temperature
- **Low Salt / Normal Salt mode** (depending on model)
- **High quality, factory tested and calibrated Black pH probe**
- **Bluetooth remote control** with e-Pool® app



### FEATUTRES

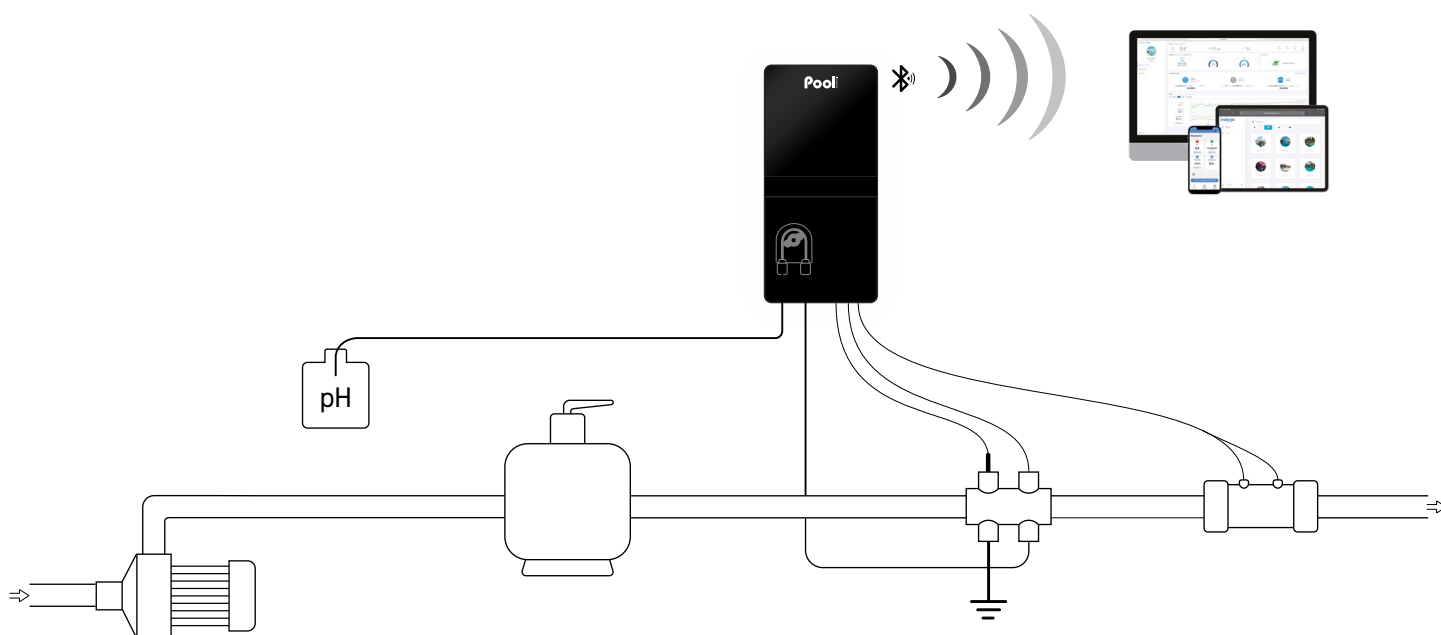
- **Smart Power:** current monitoring ensuring stable production
- **Smart Reverse polarity inversion:** self cleaning cell according to water hardness without any adjustment nor settings
- **Predictive and proportional pH regulation** in acid (pH-) or basic (pH+) mode
- **Low mode to reduce chlorine production**, when cover closed or bubbles cover installed
- **Superboost mode:** 125% superchlorination for up to 24 hours to overcome an increased need of disinfectant
- **Automatic winterization and restart from 15°C**
- **Multilingual communication interface**
- **Safeties:** lack of water, low salt, cell fault, unreached setpoint, pH setpoint overrun and overfeeding: cause of malfunction indicated by written message
- **Log of events**
- **Self-diagnosis programme for easy maintenance**

Model	Pool volume* (m³)	Chlorine production (g/h)	Reference
Poolsquad 8	40	8	ELPH23NPSP-G5NM08
Poolsquad 12	60	12	ELPH23NPSP-G5NM12
Poolsquad 16	NS 80 / LS 60	NS 16 / LS 12	ELPH23NPSP-G5HX16
Poolsquad 23	NS 120 / LS 80	NS 23 / LS 16	ELPH23NPSP-G5HX23
Poolsquad 30	NS 160 / LS 120	NS 30 / LS 23	ELPH23NPSP-G5HX30

\*in hot climates, reduce the volume by 20% - NS : Normal Salt (5 g/l) / LS : Low Salt (1,5 g/l)

Technical specifications	
Display	IPS HD panel
Screen size	4,3 inches
Keyboard type	capacitive keys
Presence sensor range (cm)	20
pH pump flow (l/h)	1,8
Corrective solution	pH- or pH+
pH pump type	peristaltic
pH regulation type	predictive
Setpoint adjustment	6,8 to 7,6
pH probe calibration	2 points pH 7 and pH 10
pH probe	Black
Polarity inversion adjustment	automatic Smart Reverse
Cell installation	in line
Cell orientation	horizontal or vertical
Cell length (mm)	225
Maximum pressure in the cell (bar)	2
Maximum flow in the cell (m³)	22 or By-pass
Control panel size (mm)	W 140 x H 300 x D 97

## INSTALLATION DIAGRAM



## CONTENT

- Control box
- Chlorination cell
- Cell cable (2 m)
- pH Black probe
- Calibration solutions pH 7 & pH 10
- Probe holder, injection connector
- Accessories holder with plugs
- Low water/salt/temperature sensor
- Grounding electrode
- Salt and water hardness analysis kit
- Power cable (2 m)
- Collar Ø 63 mm x2
- Reducer Ø 63/50 mm x4
- Wall support (with screws)
- User manual

## OPTIONS

- Independent flow switch
- Empty pH can sensor
- e-Pool® Connect connected Pool kit
- Collar Ø 50 mm x2

## WARRANTIES

<b>2</b> years	Box
<b>2+2</b> years	Cell
<b>3</b> years	Probe pH Black

\* See a retailer