

Poolsquad® UV

UV / Ultra Low Salt® Hybrid
+ pH regulator

Pool
TECHNOLOGIE

New 2023



BENEFITS

- **Ultra Low Salt® technology:** operate at any salt level higher 0,5 g/l
- **Installation of the electrode at the reactor outlet** to limit the destruction of chlorine by UV rays
- **Time-based adjustment of UV and electrolysis operation**
- **Integrated flow sensor**
- **Drain valve at the base of the reactor** for easy replacement of the UV lamp
- **Simplified maintenance of the electrode** without draining the reactor
- **Light well for visualising lamp operating status**
- **Compatible with 50 or 63 mm pipework** for easy installation
- **Plug & Play ORP option** and models with amperometric control available
- **Bluetooth remote control** with e-Pool® app



FEATURES

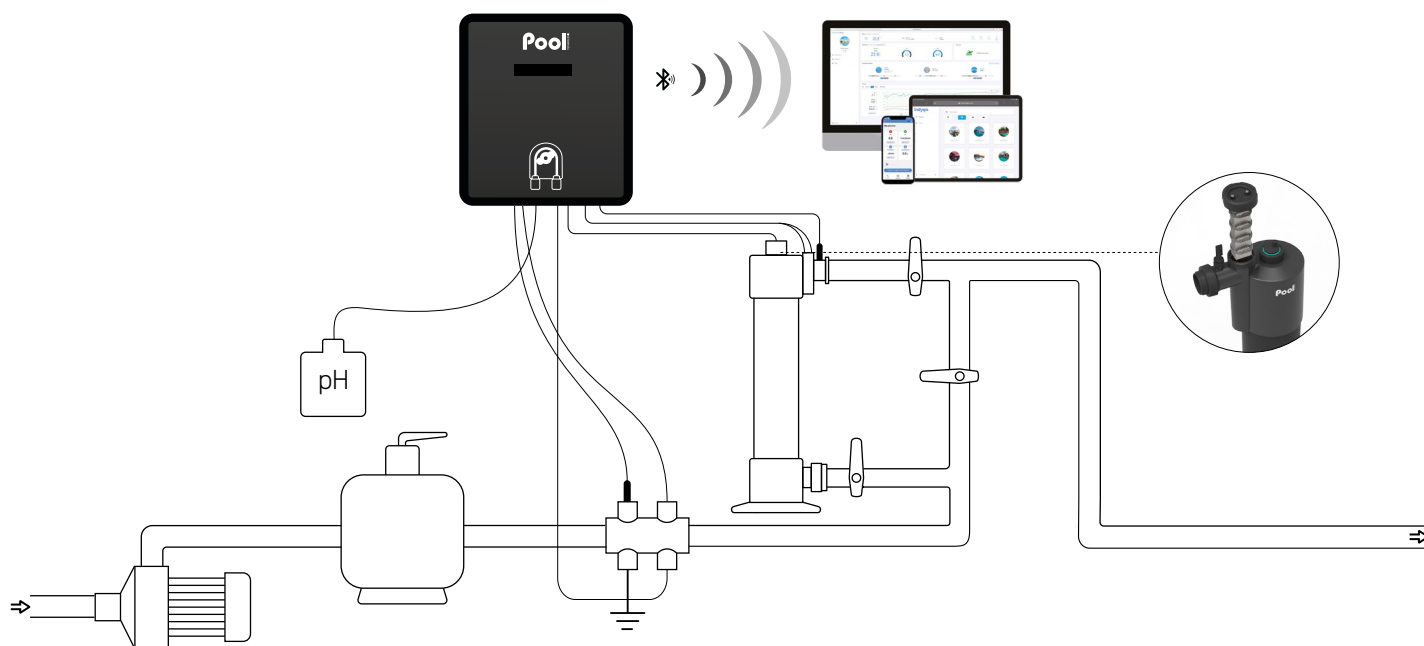
- **Smart Power:** current monitoring ensuring stable production
- **Ultra Low Salt® technology:** operate at any salt level higher 0,5 g/l
- **Ultra-violet sterilization**
- **Predictive and proportional pH regulation** in acid (pH-) or basic (pH+) according to injection history
- **Low mode to reduce chlorine production**, when cover closed or bubbles cover installed
- **Super boost mode:** 125% superchlorination for up to 24 hours to overcome an increased need of disinfectant
- **Automatic winterization and restart from 15°C**
- **Multilingual communication interface**
- **Safeties:** lack of water, low salt, cell fault, unreached setpoints, pH setpoint overrun and overfeeding, UV lamp life, UV lamp fault, flow rate
- **Log of events**
- **Self-diagnosis programme for easy maintenance**

Model	Pool volume (m ³)	Flow (m ³ /h)	Reference
Poolsquad UV 15	50	15	ELPH23NPSP-G4VX15
Poolsquad UV 25	100	25	ELPH23NPSP-G4VX25
Poolsquad UV Ampero 15	50	15	ELPA23NPSP-G4VX15
Poolsquad UV Ampero 25	100	25	ELPA23NPSP-G4VX25
Kit Plug & Play ORP			KIT16ORPP001

Technical specifications	
Display	LCD 2 lines
pH pump flow (l/h)	1,8
pH setpoint adjustment	6,8 to 7,6
Calibration pH probe	2 points pH 7 and pH 10
pH probe	Black
Corrective solution	pH- or pH+
Type of regulation	predictive
pH pump type	peristaltic
Polarity inversion adjustment	from 2h to 24h in increments of 1h
Chlorination setpoint adjustment	time slot
UV lamp power (watts)	60 ou 90
UV wavelenght	254 nm
UV lamp lifespan	16 000 hours*
Minimum UV time slot*	15 min
Minimum electrolysis time slot**	4h
Reactor height (mm)	787 (50m ³) / 1087 (100m ³)
Reactor diameter (mm)	350
Control panel size (mm)	W 266 x H 363 x D 167

*according to the number of ignitions
 **Excluding ORP and Ampero models

INSTALLATION DIAGRAM



CONTENT

- Control box
- Hybrid reactor (electrode & lamp)
- Cell cable (2m)
- pH Black probe
- Calibration solution pH 7 & pH 10
- Probe holder, injection connector
- Accessories holder with plugs
- Flow sensor
- Low water/salt/temperature sensor
- Grounding electrode
- Power cable
- Reducer Ø 63/50 mm x4
- User manual

OPTIONS

- Empty pH can sensor
- 2 years warranty extension on electrode
- e-Pool® Connect connected Pool kit
- Kit Plug & Play ORP

WARRANTIES

- 2 years** Box
- 2 years** Electrode ULS®
- 3 years** Probe pH Black