

# Poolsquad® Ampero

Saltwater chlorinator + pH regulator  
+ Amperometric controller

Pool  
TECHNOLOGIE

## BENEFITS

- **Exclusive Smart Reverse technology:** self-cleaning of the cell according to the hardness of the water without any time adjustment or parameter setting
- **Smart pH:** predictive regulation according to the history for a perfectly stable pH
- **IPS HD panel** for optimal display quality
- **Dynamic backlit capacitive keys** for easy navigation
- **Automatic standby output** by presence sensor
- **Intelligent user guidance** by written message
- **Colour-coded display of the pool status:** blue: optimal water quality, orange: information message, red: alarm
- **Indicators of the status of the device's functions** using pictograms (OFF, STOP, INJ...)
- **High quality pH Black and Chlorine Salt probes,** factory tested and calibrated
- **Simultaneous display** of setpoints and measured values (Cl, pH)
- **Bluetooth remote control** with e-Pool® app



## FEATURES

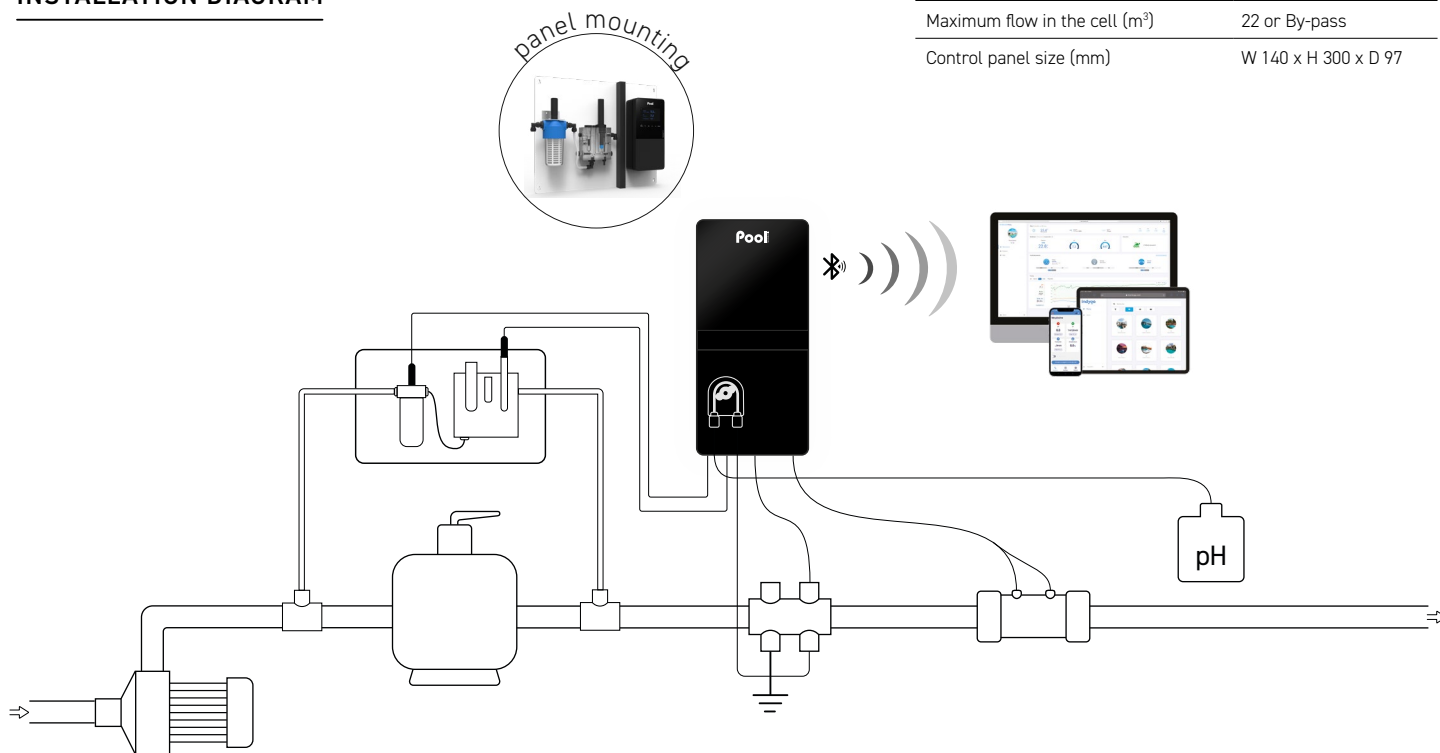
- **Smart Power:** current monitoring ensuring stable production
- **Smart Reverse polarity:** the self-cleaning of the cell automatically adapts to the hardness of the water without the need for professional or private intervention
- **Predictive and proportional pH control** in acid (pH-) or basic (pH+) mode according to injection history
- **Analysis and regulation using an amperometric probe measuring the free chlorine level in the pool (in ppm)**
- **Low mode** to reduce chlorine production, when cover closed or bubbles cover installed
- **Superboost mode:** 125% superchlorination for up to 24 hours to overcome an increased need of disinfectant
- **Automatic winterization and restart from 15°C**
- **Multilingual communication interface**
- **Sécurité:** lack of water, low salt, cell fault, high and low ORP value, unreached setpoints, pH setpoint overrun and overfeeding: cause of malfunction indicated by written message
- **Log of events**
- **Self-diagnosis programme for easy maintenance**

Model	Pool volume* (m³)	Chlorine production (g/h)	Reference
Poolsquad Ampero 8	40	8	ELPA23NPSP-G5NM08
Poolsquad Ampero 12	60	12	ELPA23NPSP-G5NM12
Poolsquad Ampero 16	NS 80 / LS 60	NS 16 / LS 12	ELPA23NPSP-G5HX16
Poolsquad Ampero 23	NS 120 / LS 80	NS 23 / LS 16	ELPA23NPSP-G5HX23
Poolsquad Ampero 30	NS 160 / LS 120	NS 30 / LS 23	ELPA23NPSP-G5HX30
Poolsquad Ampero 8 panel	40	8	ELPA23NPSP-G5NM08 PANAMP
Poolsquad Ampero 12 panel	60	12	ELPA23NPSP-G5NM12 PANAMP
Poolsquad Ampero 16 panel	NS 80 / LS 60	NS 16 / LS 12	ELPA23NPSP-G5HX16 PANAMP
Poolsquad Ampero 23 panel	NS 120 / LS 80	NS 23 / LS 16	ELPA23NPSP-G5HX23 PANAMP
Poolsquad Ampero 30 panel	NS 160 / LS 120	NS 30 / LS 23	ELPA23NPSP-G5HX30 PANAMP

\*in hot climates, reduce the volume by 20% - NS : Normal Salt (5 g/l) / LS : Low Salt (1,5 g/l)

Technical specifications	
Display	IPS HD panel
Screen size	4,3 inches
Keyboard type	capacitive keys
Presence sensor range (cm)	20
Free chlorine setpoint	0,1 to 5 ppm
Amperometric probe	Salt
pH pump flow (l/h)	1,8
Corrective solution	pH- or pH+
pH pump type	peristaltic
pH regulation type	predictive
pH setpoint adjustment	6,8 to 7,6
Calibration pH probe	2 points pH 7 and pH 10
Polarity inversion adjustment	automatic Smart Reverse
Cell installation	in line
Cell orientation	horizontal or vertical
Cell length (mm)	225
Maximum pressure in the cell (bar)	2
Maximum flow in the cell (m³)	22 or By-pass
Control panel size (mm)	W 140 x H 300 x D 97

## INSTALLATION DIAGRAM



## CONTENT

- Control box
- Chlorination cell
- Cell cable (2 m)
- pH Black probe
- Calibration solutions pH 7 & pH 10
- Chlorine salt sensor
- Probe holder, injection connector
- ORP probe & ORP measure chamber kit
- Accessories holder with plugs
- Low water/salt/temperature sensor
- Grounding electrode
- Salt and water hardness analysis kit
- Power cable (2 m)
- Collar Ø 63 mm x2
- Reducer Ø 63/50 mm x4
- Wall support (with screws)
- User manual

## OPTIONS

- Independent flow switch
- Empty pH can sensor
- e-Pool® Connect connected Pool kit
- Collar Ø 50 mm x2

## INFO

Amperometric regulation requires a professional expertise. The sale of Ampero regulation device is exclusively reserved to pool specialists who have been specifically trained on this device. Please contact sales representative to ask for a training.

## WARRANTIES

**2** years Box

**2+2** years Cell

\* See a retailer

**3** years Probe pH Black

**1** year Probe Cl Salt