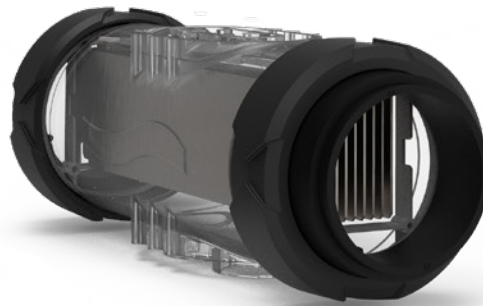




Benefits

- **Smart Reverse exclusive technology:** self cleaning cell according to water hardness without any adjustment nor settings
- **In line or dashboard display**
- **Low Salt / Normal Salt mode** (depending on model)
- **Bluetooth remote control** with e-Pool[®] app
- **Pool Terre grounding electrode included**
- **Transparent accessories holder**



Features

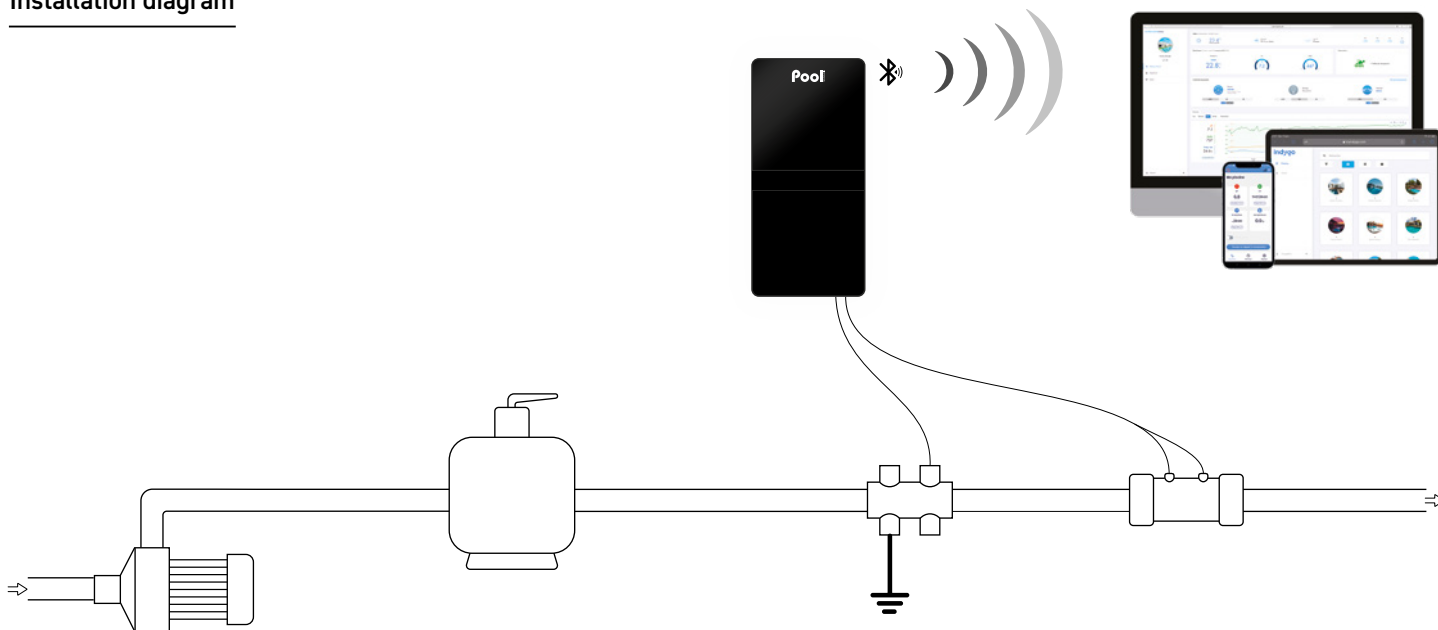
- **Smart Power:** current monitoring ensuring stable production
- **Smart Reverse polarity inversion:** self cleaning cell according to water hardness without any adjustment nor settings
- **Low mode to reduce chlorine production,** when cover closed or bubbles cover installed
- **Superboost mode:** 125% superchlorination for up to 48 hours to overcome an increased need of disinfectant
- **Automatic winterization and restart from 15C°**
- **Multilingual communication interface**
- **Multilingual alarm message:** written message display of malfunction cause
- **Display of pool salt level, water temperature and cell lifespan**
- **Log of events**
- **Self-diagnosis** programme for easy maintenance

Model	Pool volume* (m ³)	Chlorine production (g/h)	Reference
Autosalt NPS 8	40	8	ELLY20NPSP-G4NM08
Autosalt NPS 12	60	12	ELLY20NPSP-G4NM12
Autosalt NPS 16	NS 80 / LS 60	NS 16 / LS 12	ELLY20NPSP-G4HX16
Autosalt NPS 23	NS 120 / LS 80	NS 23 / LS 16	ELLY20NPSP-G4HX23
Autosalt NPS 30	NS 160 / LS 120	NS 30 / LS 23	ELLY20NPSP-G4HX30

*In hot climates, reduce the volume by 20% - NS : Normal Salt (5 g/l) / LS : Low Salt (1,5 g/l)

Technical specifications	
Display	LCD 2 lines
Polarity inversion adjustment	automatic Smart Reverse
Cell installation	in line
Cell orientation	horizontal or vertical
Cell length (mm)	225
Maximum pressure in the cell (bar)	2
Maximum flow in the cell (m ³)	22 or By-pass
Maximum water temperature (°C)	40
Control panel size (mm)	W 140 x H 300 x D 97

Installation diagram



Content

- Control box
- Chlorination cell
- Cell cable (2 m)
- Accessories holder with plugs
- Low water/salt/temperature sensor
- Pool Terre grounding electrode
- Salt and water hardness analysis kit
- Power cable (2 m)
- Collar diam 63 mm x2
- Reducer 63/50 mm x4 (x2 models <80 m³)
- Wall support (with screws)
- User manual

Options

- Independent flow switch
- e-Pool® Connect connected Pool kit
- Collar diameter 50 mm x2

Warranties

2 years Box

2+2* years Cell

*See a retailer