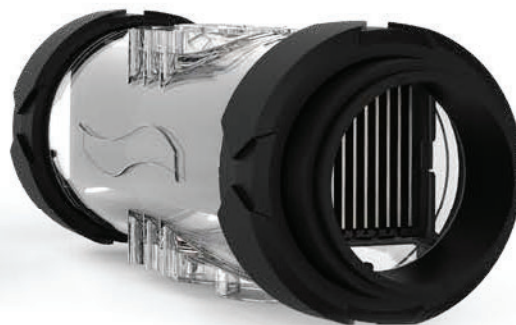




Benefits

- Intuitive navigation on backlit LCD display
- In line or dashboard display
- Adjustable chlorine production from 0 to 99%
- Low Salt / Normal Salt mode (depending on model)
- High quality self cleaning cell
- Cell collar diam 50 mm (depending on model)
- Bluetooth remote control with e-Pool® app
- New: clear accessories holder



Features

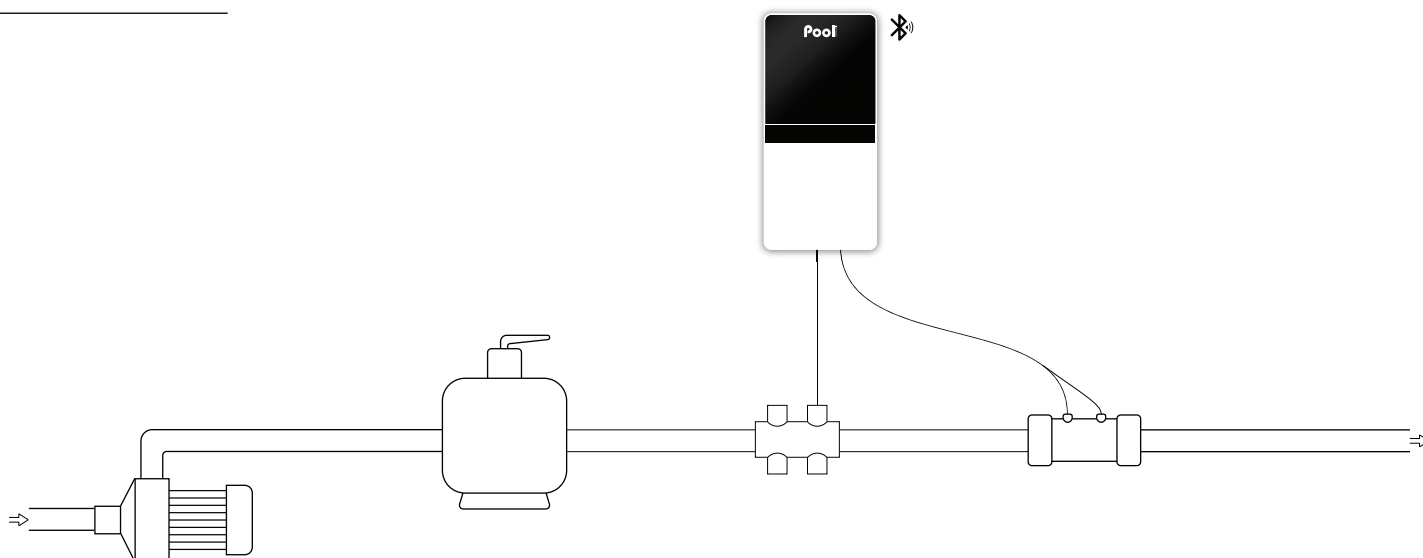
- **Smart Power:** current monitoring ensuring stable production
- **Self cleaning cell by memory adjustable polarity inversion** according to water hardness
- **Operate at any salt level from 2,5g/l (NS) and 1,5g/l (LS)** without high limit
- **Superboost mode:** 125% superchlorination for up to 48 hours to overcome an increased need of disinfectant
- **Low mode to reduce chlorine production,** when cover closed or bubble cover installed
- **Multilingual communication interface**
- **Multilingual alarm message:** written message display of malfunction cause
- **Automatic winterization and restart from 15C°**
- **Display of pool salt level, water temperature and cell lifespan**
- **Self-diagnosis programme for easy maintenance**
- **Log of events**
- **Easy installation and assembly**

Model	Pool volume m ³	Chlorine Production g/h	Reference
Justsalt NPS 8	40	8	ELLY20NPSA-G4NM08
Justsalt NPS 12	60	12	ELLY20NPSA-G4NM12
Justsalt NPS 16	NS 80 / LS 60	NS 16 / LS 12	ELLY20NPSA-G4HX16
Justsalt NPS 23	NS 120 / LS 80	NS 23 / LS 16	ELLY20NPSA-G4HX23
Justsalt NPS 30	NS 160 / LS 120	NS 30 / LS 23	ELLY20NPSA-G4HX30

* In hot climates, reduce the volume by 20% - NS : Normal Salt (5g/l) / LS : Low Salt (1,5g/l)

Technical specifications	
Display	LCD 2 lines
Polarity inversion adjustment	from 2h to 24h in increments of 1h
Cell installation	in line
Cell orientation	horizontal or vertical
Cell length (mm)	225
Maximum pressure in the cell (bar)	2
Maximum flow in the cell (m ³)	22 or By-pass
Maximum water temperature (°C)	40
Control panel size (mm)	W140 x H300 x D97

Installation diagram



Content

- Control box
- Chlorination cell
- Cell cable (2m)
- Low water/salt/temperature sensor
- Accessories holder with plugs
- Salt and water hardness analysis kit
- Power cable (2m)
- Collar diam 63mm x2 (50mm <80m³ models)
- Reducer 63/50mm x4
- Wall support (with screws)
- User manual

Options

- Pool Terre grounding electrode
- Independent flow switch
- Indygo® Connected Pool kit
see page 52-53



*See a retailer